

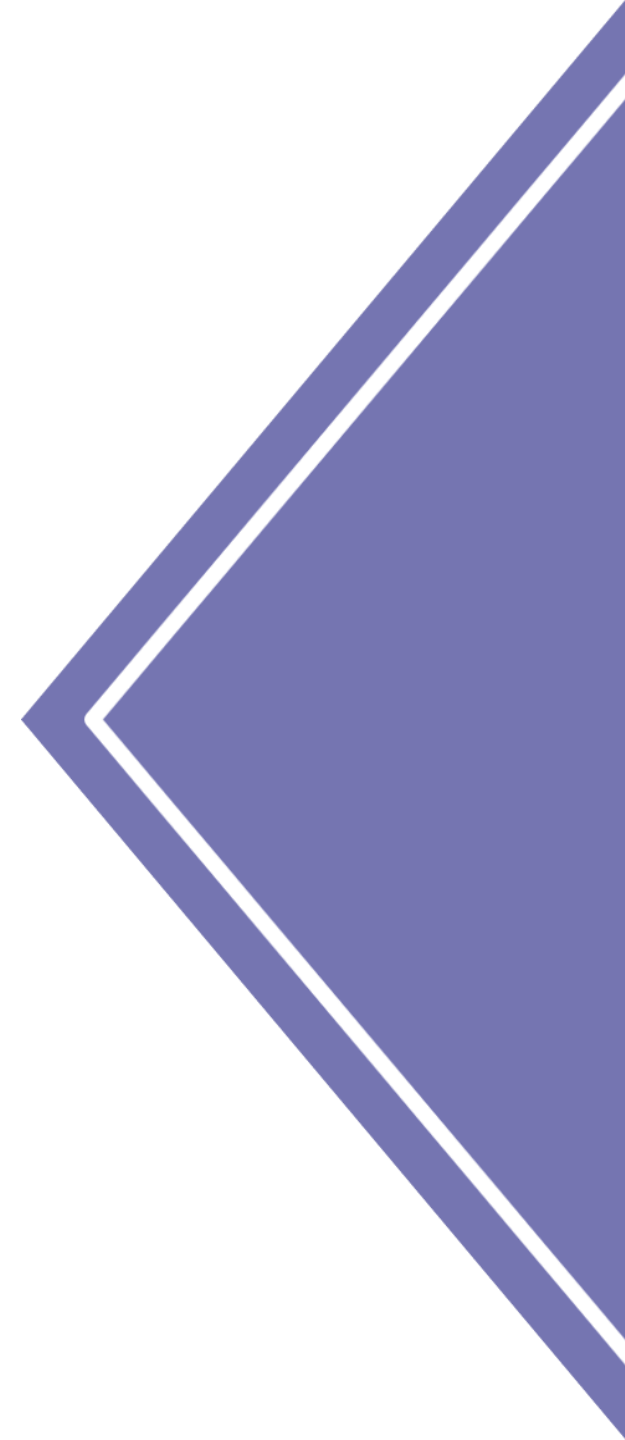
Discipleship Pathway Assessment – Sharing Christ

Representative Survey of Protestant
Churchgoers

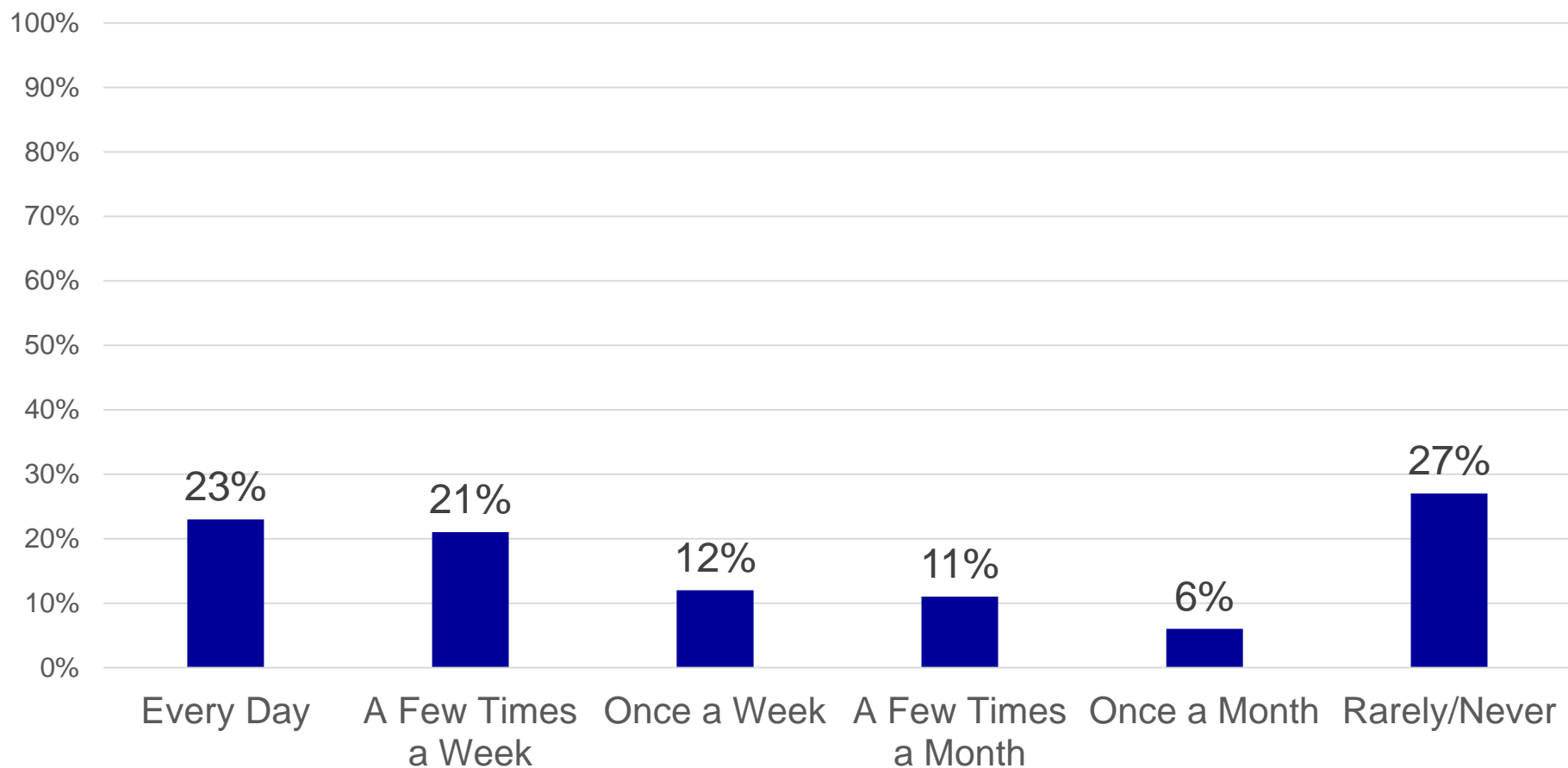
Methodology

- The online survey of 2,500 Protestant churchgoers was conducted January 14–29, 2019
- Respondents were screened to include those who identified as Protestant/non-denominational and attend religious services at least once a month
- Quotas and slight weights were used to balance gender, age, region, ethnicity, income, and denominational affiliation
- The completed sample is 2,500 surveys
- The sample provides 95% confidence that the sampling error does not exceed ±2.0%
- Margins of error are higher in sub-groups

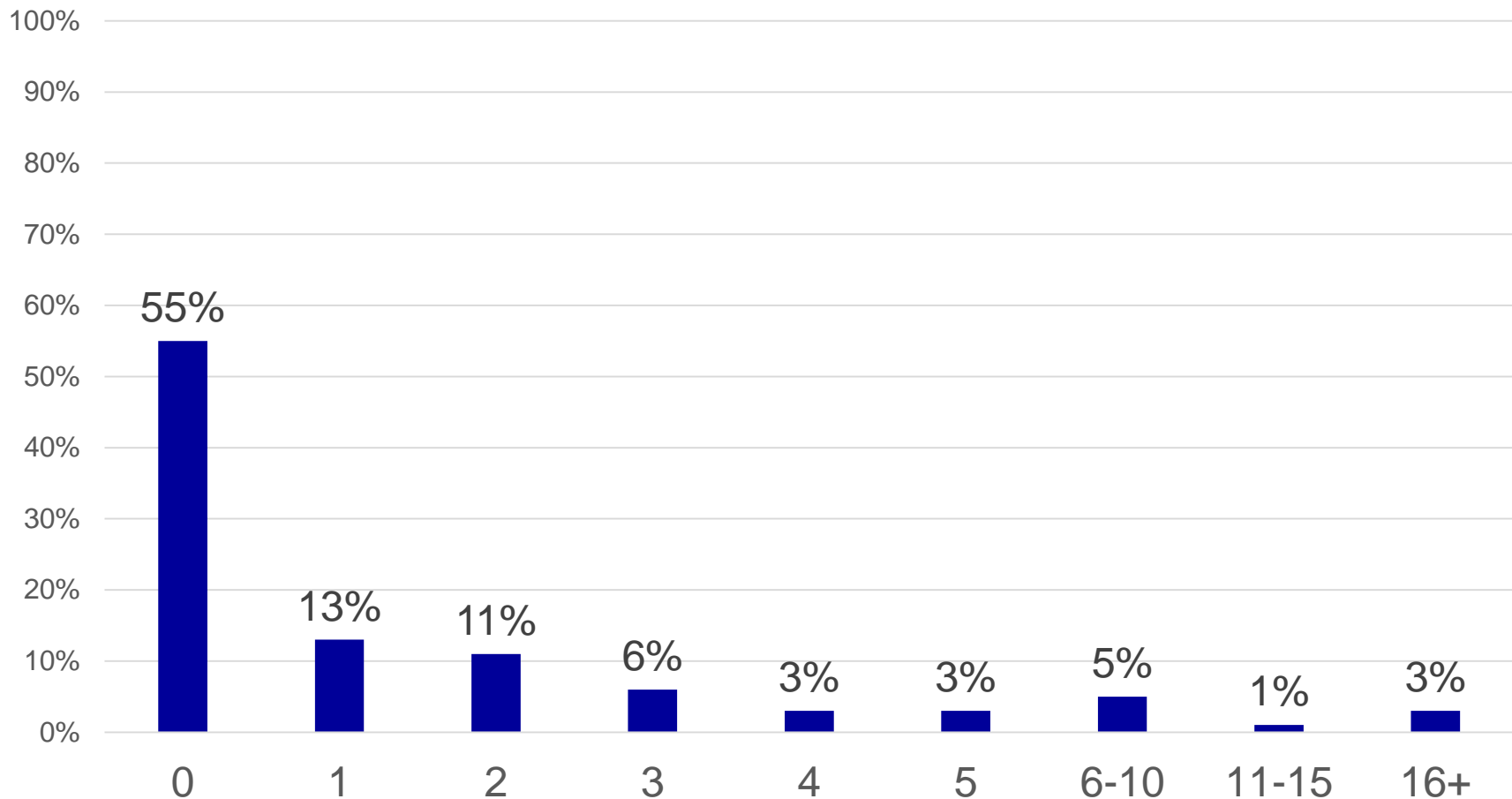
Survey Responses



“Pray for opportunities to tell others about Jesus Christ”

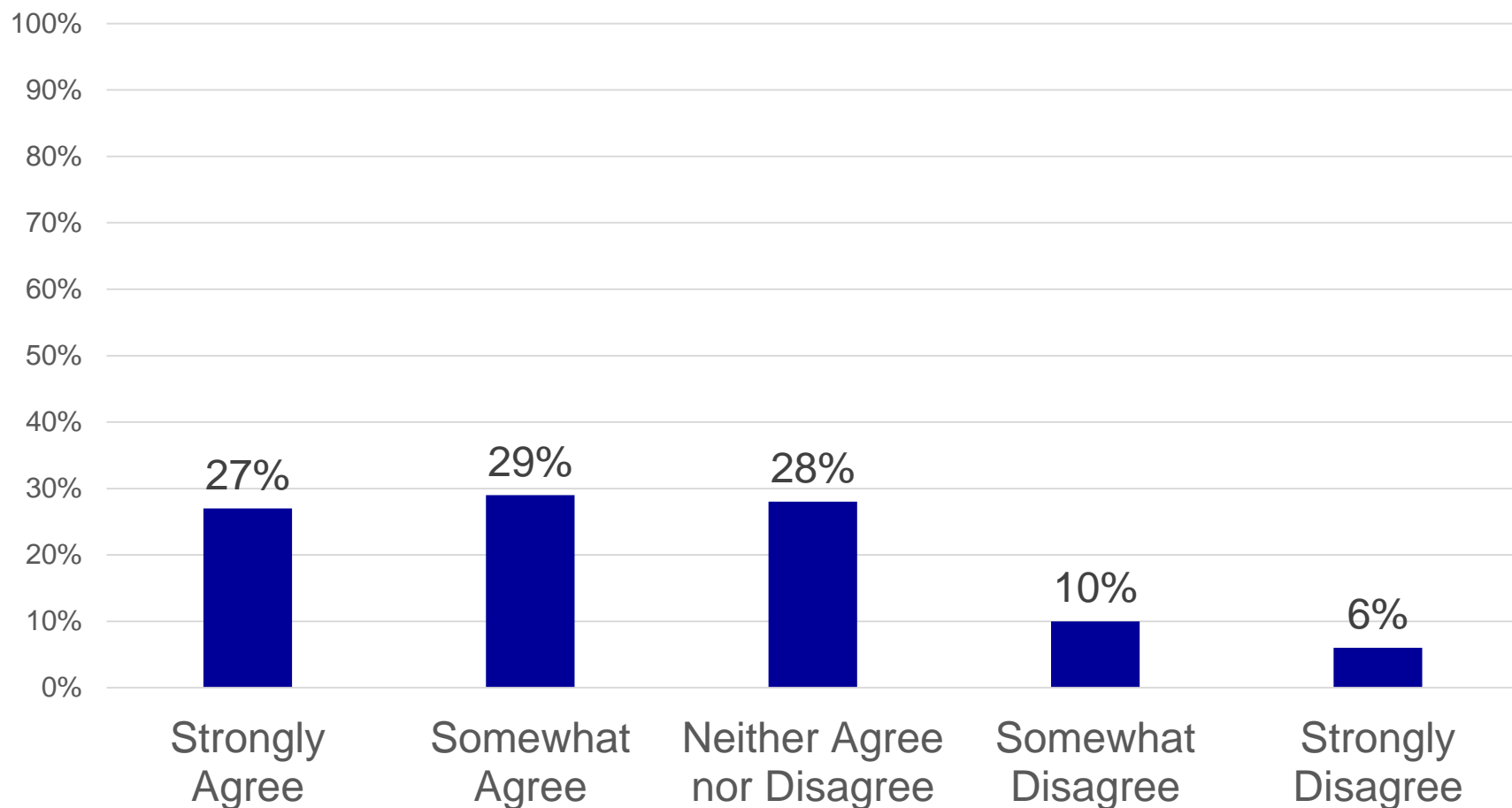


55% have not shared with someone how to become a Christian in the past 6 months

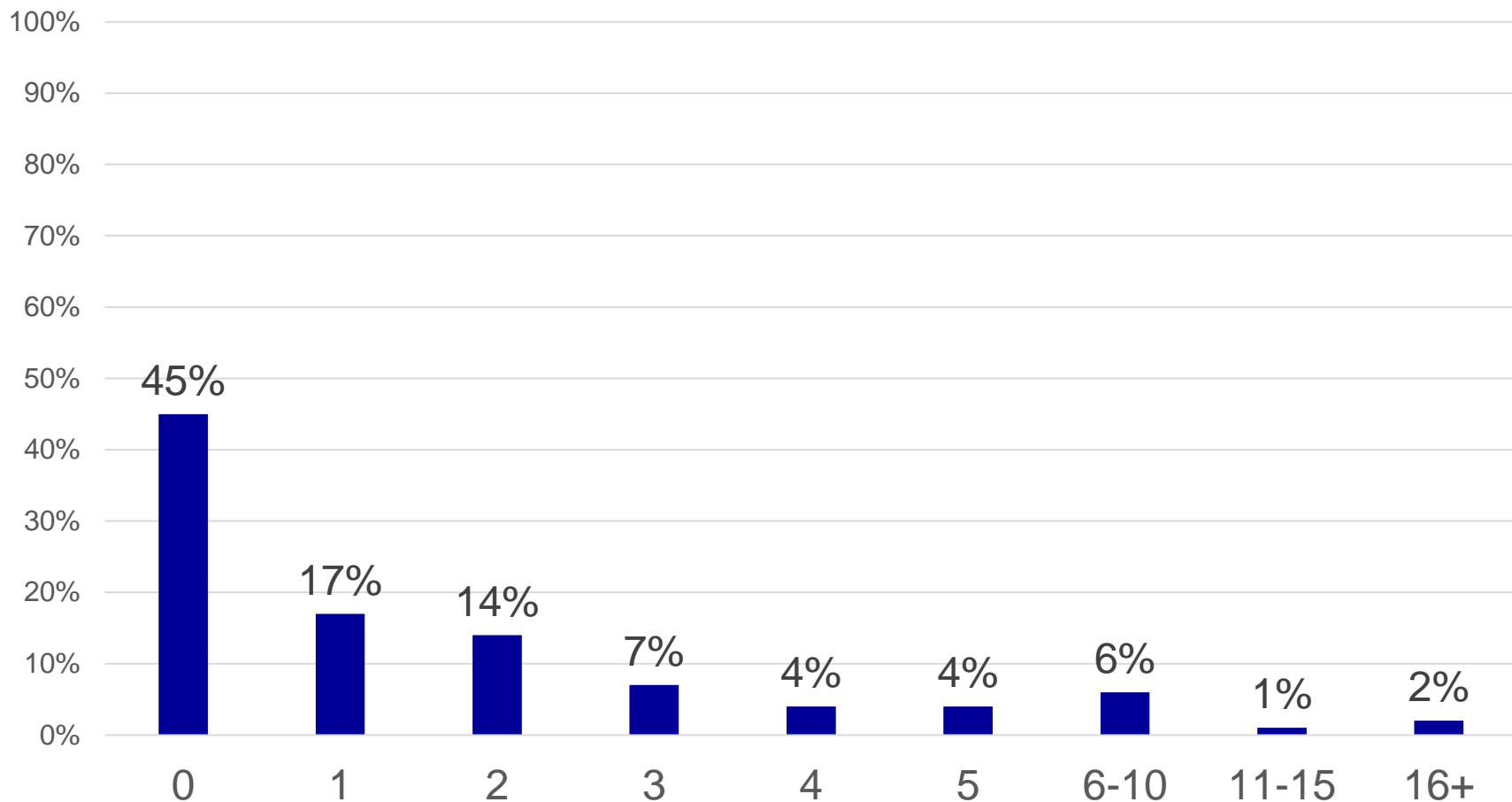


Q36_a: "In the past six months, about how many times have you, personally, done any of the following? (If none, enter a zero.) shared with someone how to become a Christian"

“I am eager to talk about Jesus with people who are not like me in terms of ethnicity, income, or interests”



45% have not invited an unchurched person to a church service or program in the past 6 months



Q36_c: "In the past six months, about how many times have you, personally, done any of the following? (If none, enter a zero.) invited an unchurched person to attend a church service or some other program at your church"

Significant Differences

Gender

Region

Age

Ethnicity

Education Level

Worship Service Attendance

Significant Statistical Differences

Comparisons were made to determine if there are any significant statistical differences among gender, region, age, and ethnicity.

Gender	Region	Age	Ethnicity
Male	Northeast	18-34	White
Female	Midwest	35-49	African-American
	South	50-64	Hispanic
	West	65+	Other Ethnicities

Note: Region is defined by US Census locations

Significant Statistical Differences

Comparisons were made to determine if there are any significant statistical differences among education and worship service attendance.

Education	Worship Service Attendance
High School graduate or less	Once a week or more
Some college	Once or twice a month
Bachelor's Degree	A few times a year
Graduate Degree	Once a year or less
Education	Never

“Pray for opportunities to tell others about Jesus Christ”

- Those in the South (27%) are the region most likely to select “Every day”
- Those in the Midwest (33%) are more likely to select “Rarely/Never” than those in the South (25%) and West (25%)
- Those age 50-64 (26%) are more likely to select “Every day” than those age 65+ (20%)
- Those who are High School Graduates or less (31%) are the education group most likely to select “Every day”
- Those with a Bachelor’s degree (29%) or a Graduate degree (34%) are more likely to select “Rarely/Never” than those who are High School Graduates or less (22%)
- Hispanics (36%) and African-Americans (29%) are more likely to select “Every day” than Whites (20%) and Other ethnicities (17%)
- Hispanics (15%) are the least likely ethnic group to select “Rarely/Never”
- Those who attend a worship service four times a month or more (25%) are less likely to select “Rarely/Never” than those who attend less than 4 times a month (31%)

“In the past six months, about how many times have you, personally, shared with someone how to become a Christian”

- Females (57%) are more likely to indicate 0 times than Males (52%)
- Those in the Midwest are the region most likely to indicate 0 times (61%)
- Those age 65+ are the age group most likely to indicate 0 times (62%)
- Those with a Graduate degree are the education group most likely to indicate 0 times (64%)
- Hispanics are the ethnic group least likely to indicate 0 times (32%)
- Those who attend a worship service four times a month or more (53%) are less likely to indicate 0 times than those who attend less than 4 times a month (60%)

“I am eager to talk about Jesus with people who are not like me in terms of ethnicity, income, or interests”

- Those in the South (31%) and West (27%) are more likely to Strongly Agree than those in the Midwest (21%)
- Those age 65+ are the age group least likely to Strongly Agree (20%)
- Those who are High School Graduates or less (32%) and with Some College (30%) are more likely to Strongly Agree than those with a Bachelor’s degree (23%) or a Graduate degree (20%)
- Hispanics (40%) and African-Americans (32%) are more likely to Strongly Agree than Whites (23%)
- Those who attend a worship service four times a month or more (29%) are more likely to Strongly Agree than those who attend less than 4 times a month (23%)

“In the past six months, about how many times have you, personally, invited an unchurched person to attend a church service or program”

- Those in the Midwest (50%) are the region more likely to indicate 0 times than those in the South (43%)
- Those with a Graduate degree are the education group most likely to indicate 0 times (56%)
- Hispanics are the ethnic group least likely to indicate 0 times (29%)
- Those who attend a worship service four times a month or more (42%) are less likely to indicate 0 times than those who attend less than 4 times a month (53%)

Discipleship Pathway Assessment – Sharing Christ

Representative Survey of Protestant
Churchgoers