

# American Views on Local Church Ministry

A SURVEY OF 1,005 AMERICANS

Lifeway **research**

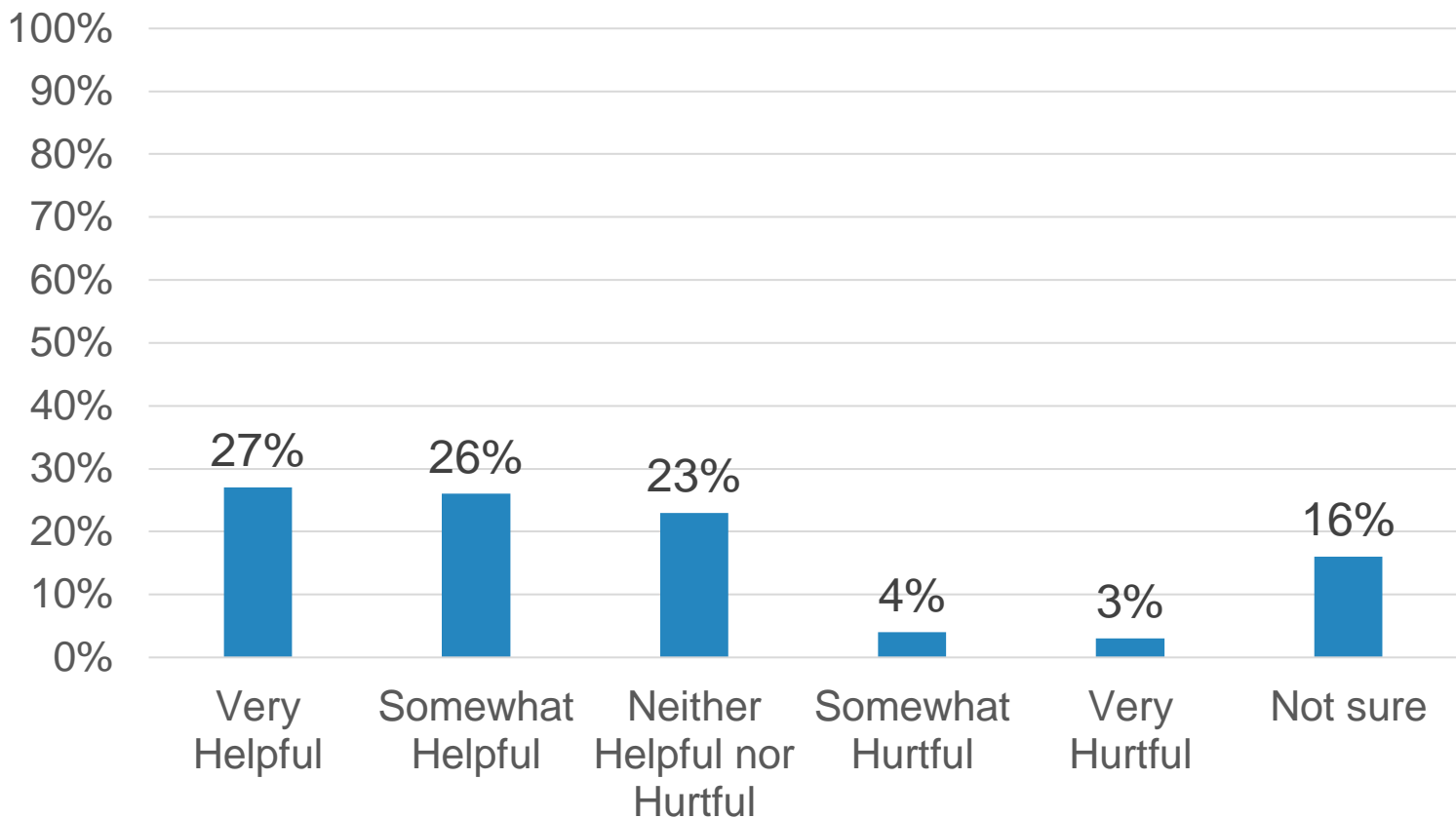
# Methodology

- The online survey of 1,005 Americans was conducted September 3-14, 2021 using a national pre-recruited panel
- Quotas and slight weights were used to balance gender, age, region, ethnicity, education, and religion to more accurately reflect the population
- The completed sample is 1,005 surveys
- The sample provides 95% confidence that the sampling error from the panel does not exceed  $\pm 3.3\%$  This margin of error accounts for the effect of weighting
- Margins of error are higher in sub-groups
- Comparisons are made on Q16 with an online survey of 1,000 adult Americans Lifeway Research conducted September 27 – October 1, 2016
- Comparisons are made on Q17 with an online survey of 1,158 adult Americans Lifeway Research conducted September 17-18, 2014

# Definitions

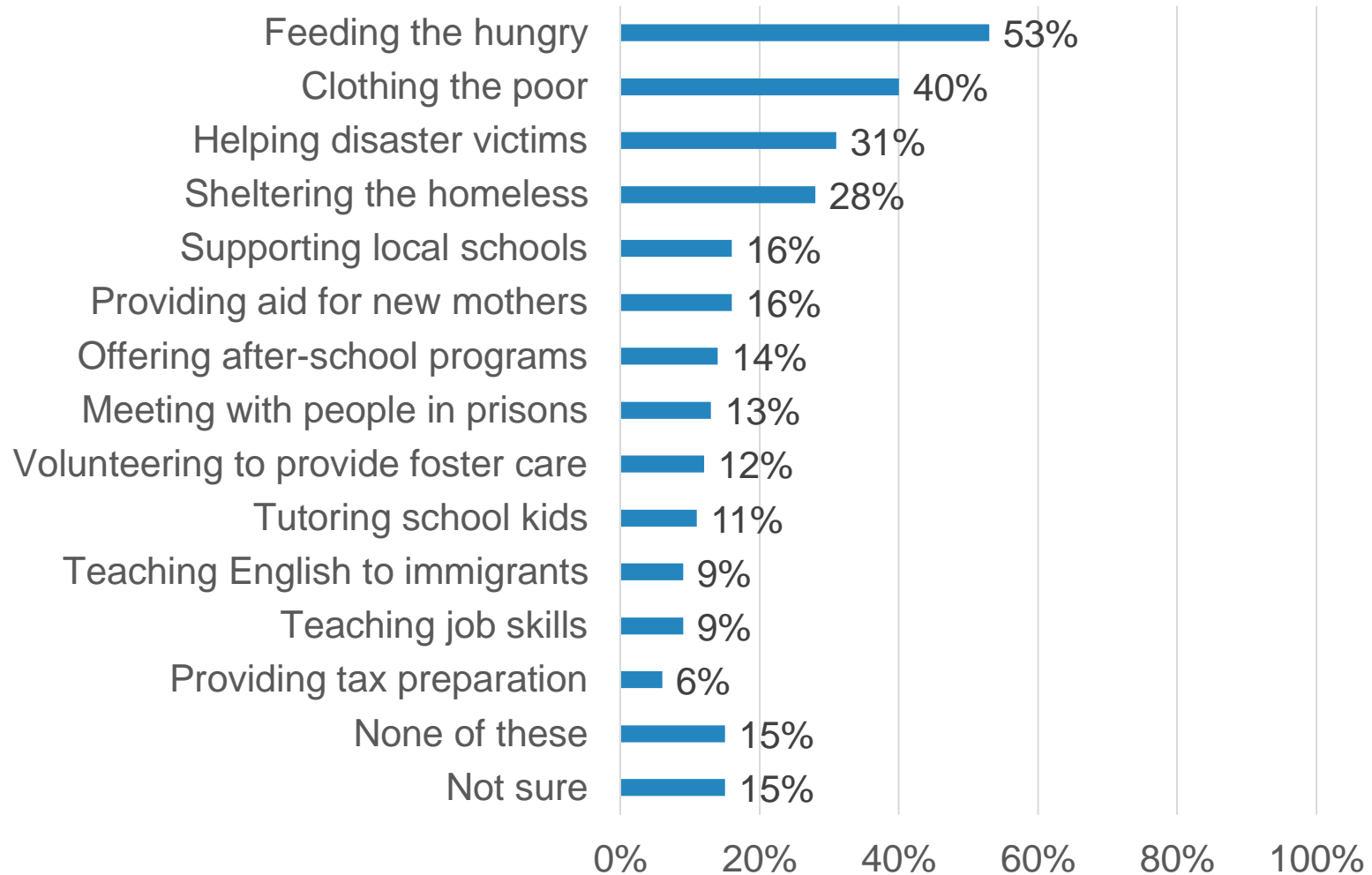
- **Evangelical Beliefs** are defined using the NAE Lifeway Research Evangelical Beliefs Research Definition based on respondent beliefs
- Respondents are asked their level of agreement with four separate statements using a four-point, forced choice scale (strongly agree, somewhat agree, somewhat disagree, strongly disagree). Those who strongly agree with all four statements are categorized as having Evangelical Beliefs
  - The Bible is the highest authority for what I believe
  - It is very important for me personally to encourage non-Christians to trust Jesus Christ as their Savior
  - Jesus Christ's death on the cross is the only sacrifice that could remove the penalty of my sin
  - Only those who trust in Jesus Christ alone as their Savior receive God's free gift of eternal salvation

# 53% say that churches in their community have been helpful during the coronavirus pandemic



Lifeway research

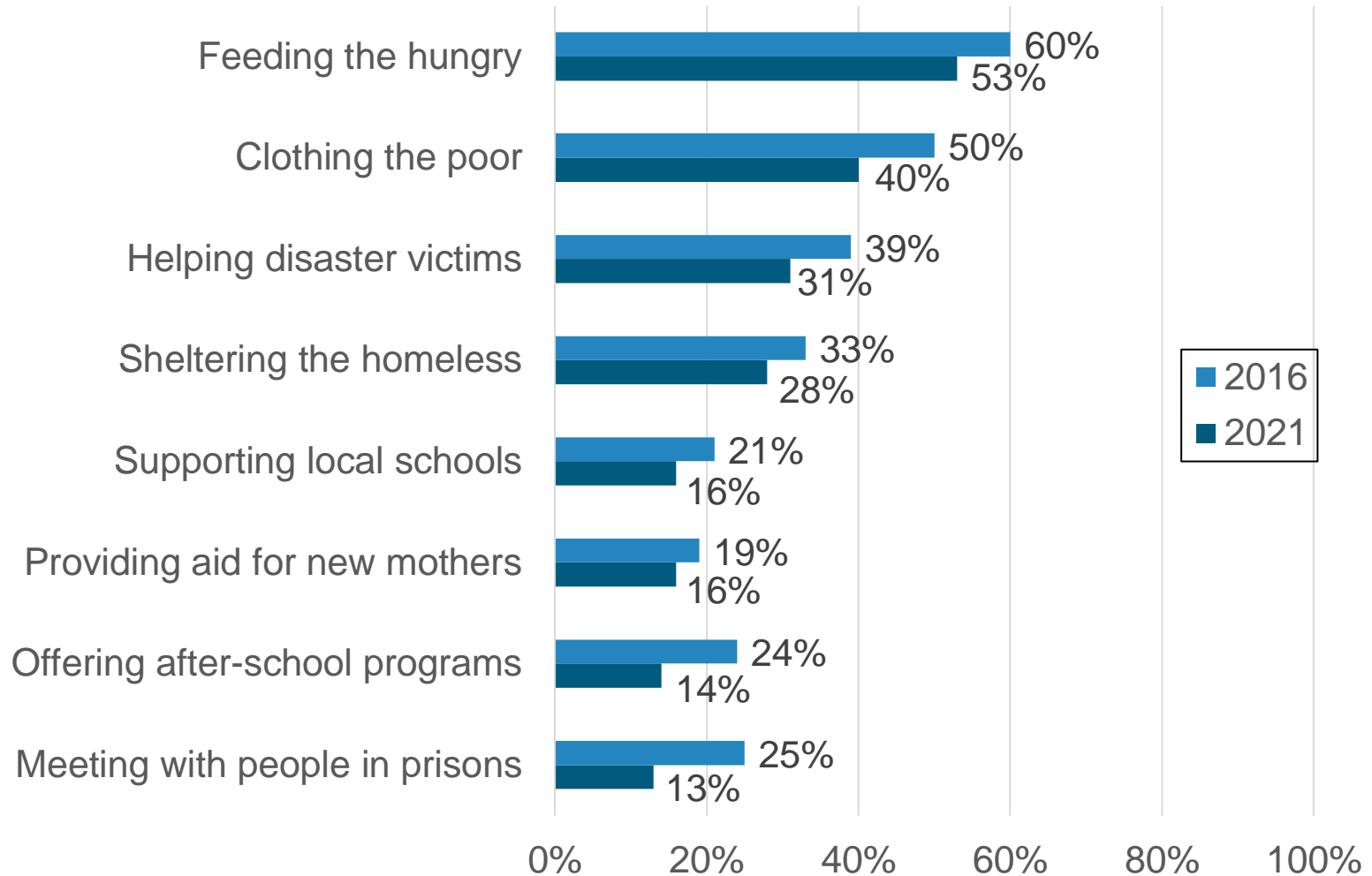
# “Which, if any, of the following areas of service have you heard local Christian churches or their members doing in the last 6 months?”



Lifeway research

Q16: “Which, if any, of the following areas of service have you heard local Christian churches or their members doing in the last 6 months? (Select all that apply)” n=1,005

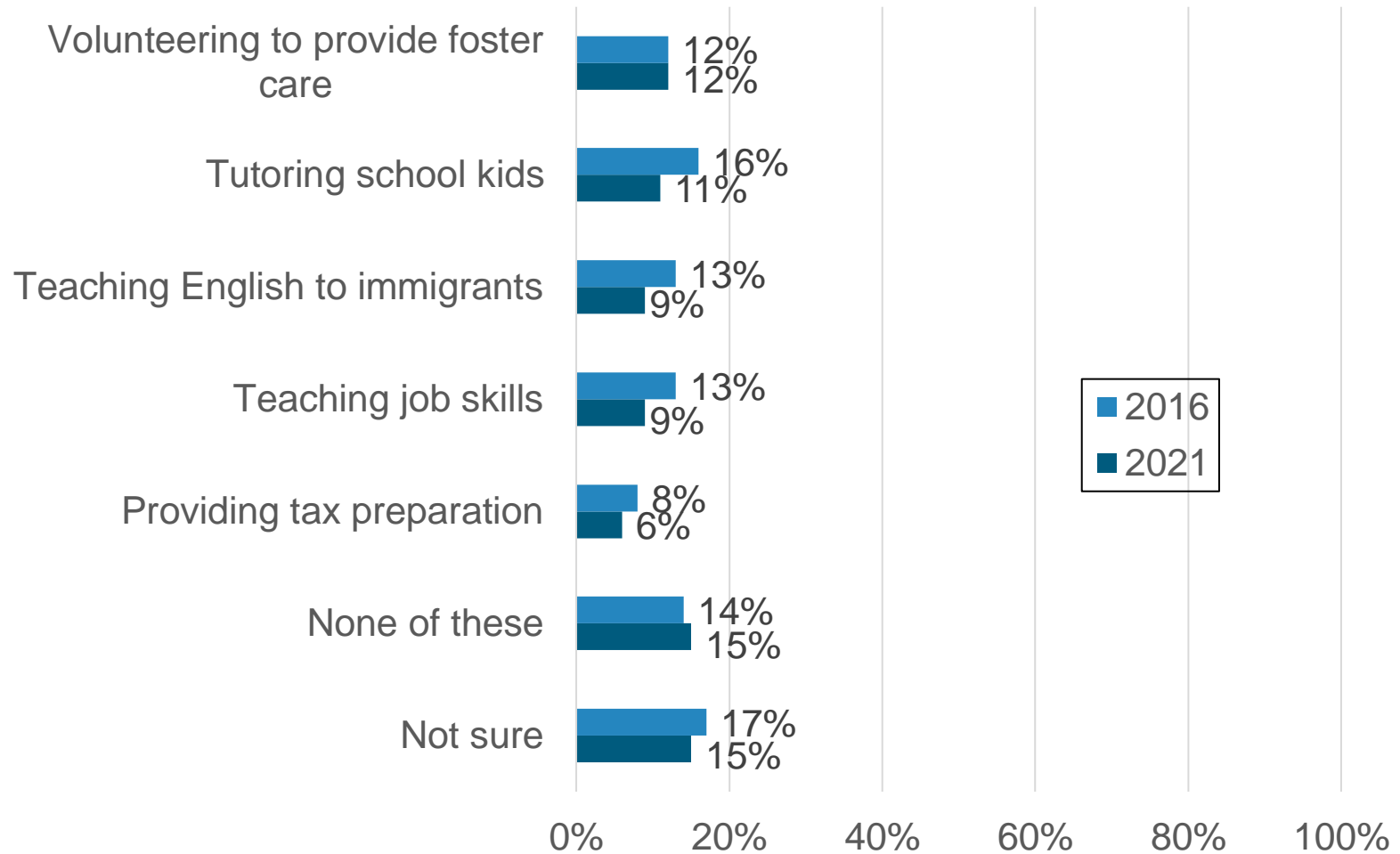
# Americans are less likely to have noticed specific areas of service from local Christian churches in the last 6 months than in 2016



Lifeway research

Q16: "Which, if any, of the following areas of service have you heard local Christian churches or their members doing in the last 6 months? (Select all that apply)" n=1,005

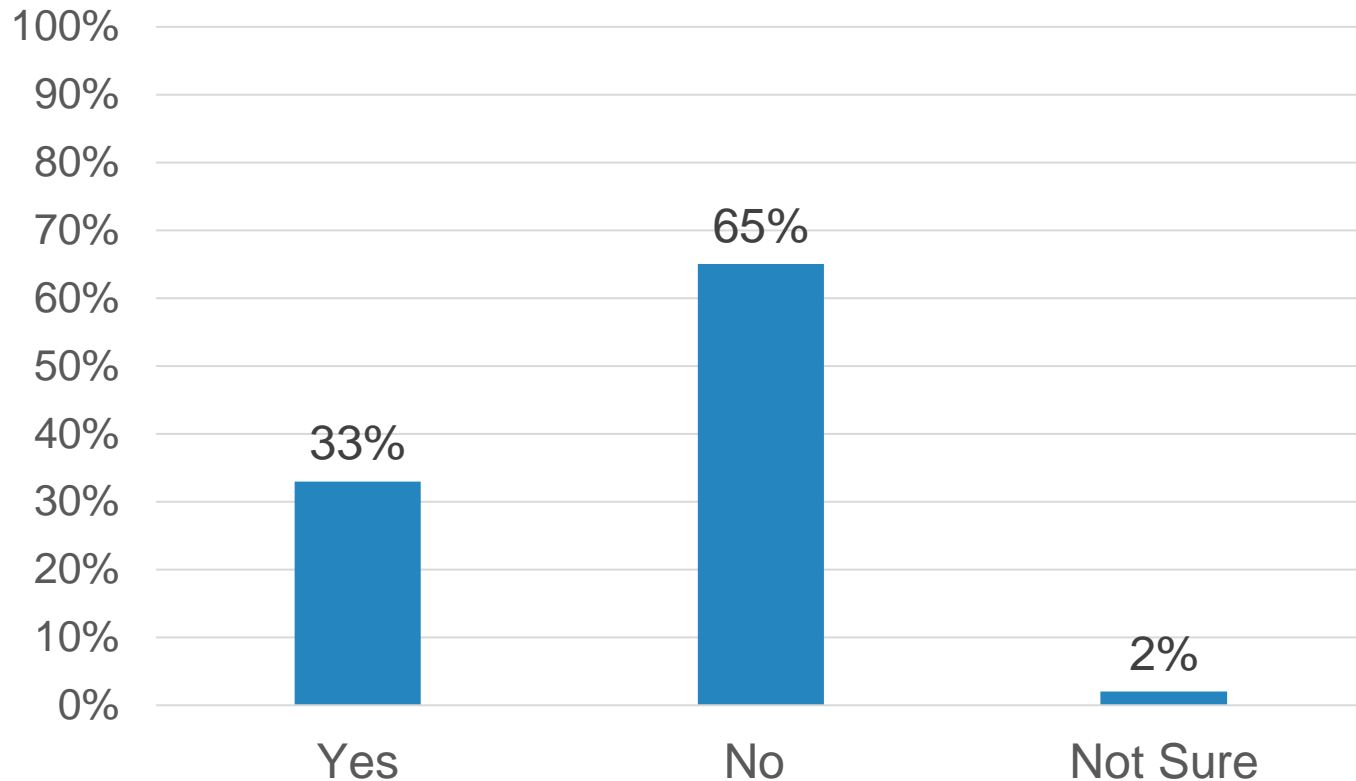
# There is no change in the percentage of Americans noticing one or more area of service from local churches compared to 2016 continued



Lifeway research

Q16: "Which, if any, of the following areas of service have you heard local Christian churches or their members doing in the last 6 months? (Select all that apply)" n=1,005

# 33% say that their family has received food from a church-run food pantry in the past

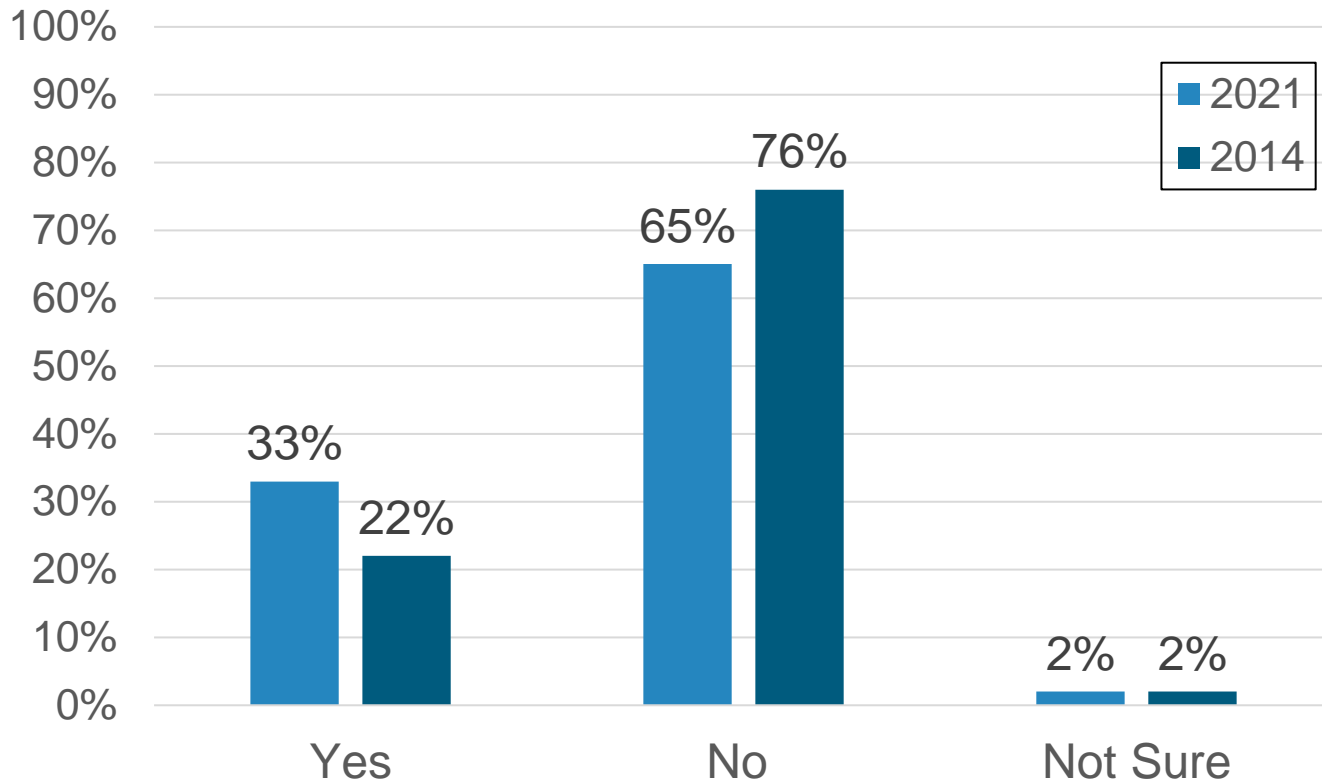


Lifeway research

Q17: "My family has received food from a church-run food pantry in the past.." n=1,005



# Compared to 2014, more Americans are in families who have benefited from a church-run food pantry in the past



Lifeway research

Q17: "My family has received food from a church-run food pantry in the past.." n=1,005

# Significant Differences

Gender

Age

Ethnicity

Region

Education Level

Religion

Worship Service Attendance

Evangelical Beliefs

# Significant Differences

Comparisons were made to determine if there are any significant statistical differences among gender, age, ethnicity, region, and education.

GENDER	AGE	ETHNICITY	REGION	EDUCATION
Male	18-34	White	Northeast	High School graduate or less
Female	35-49	African American	Midwest	Some college
	50-64	Hispanic	South	Bachelor's Degree
	65+	Other Ethnicities	West	Graduate Degree

Note: Region is defined by the US Census locations

# Significant Statistical Differences

Comparisons were made to determine if there are any significant statistical differences among religion, worship service attendance, and evangelical beliefs.

RELIGION	WORSHIP SERVICE ATTENDANCE AMONG CHRISTIANS	EVANGELICAL BELIEFS
Catholic	Less than once a month	Yes
Protestant	1 to 3 times a month	No
Other Religions	4 or more times a month	
Unaffiliated		

## **“Have churches in your community been helpful or hurtful during the coronavirus pandemic.”**

- Those age 18-34 (56%) and 35-49 (63%) are more likely to select “Helpful” than those 50-64 (46%) and 65+ (46%)
- African Americans (59%) are more likely to select “Helpful” than Other Ethnicities (44%)
- Hispanics (13%) are more likely to select “Hurtful” than Whites (6%) and African Americans (5%)
- Those in the South (57%) are more likely to select “Helpful” than those in the Northeast (45%)
- Those with Some College (10%) or a Graduate Degree (11%) are more likely to select “Hurtful” than those who are High School Graduates or less (5%)
- Religiously Unaffiliated (12%) are more likely to select “Hurtful” than Protestants (6%)
- Christians who attend a worship service 1 to 3 times a month (72%) and 4 or more times a month (72%) are more likely to select “Helpful” than Christians who attend less than once a month (42%)
- Those with evangelical beliefs are more likely to select “Helpful” than those without evangelical beliefs (72% v. 48%)

**“Which, if any, of the following areas of service have you heard local Christian churches or their members doing in the last 6 months? ”**

### **Tutoring school kids**

- Those age 18-34 (15%) and 35-49 (15%) are more likely to Select than those 50-64 (8%) and 65+ (6%)
- Those with a Bachelor’s Degree (14%) or a Graduate Degree (17%) are more likely to select than those who are High School Graduates or less (9%)
- Catholics (13%) and Other Religions (18%) are more likely to select than Religiously Unaffiliated (7%)
- Christians who attend a worship service 1 to 3 times a month (15%) and 4 or more times a month (15%) are more likely to select than Christians who attend less than once a month (8%)

**“Which, if any, of the following areas of service have you heard local Christian churches or their members doing in the last 6 months? ”**

### **Volunteering to provide foster care**

- Males are more likely to select than Females (14% v. 10%)
- Those age 18-34 (14%) and 35-49 (17%) are more likely to select than those 50-64 (8%) and 65+ (5%)
- Other Ethnicities (18%) are more likely to select than Whites (11%)
- Religiously Unaffiliated are the least likely to select (7%)
- Christians who attend a worship service 1 to 3 times a month (21%) and 4 or more times a month (16%) are more likely to select than Christians who attend less than once a month (8%)

**“Which, if any, of the following areas of service have you heard local Christian churches or their members doing in the last 6 months? ”**

### **Supporting local schools**

- Whites (18%) are more likely to select than Hispanics (11%)
- Those in the Midwest (20%) are more likely to select than those in the West (13%)
- Protestants (20%) are more likely to select than Religiously Affiliated (9%)
- Christians who attend a worship service 1 to 3 times a month (22%) and 4 or more times a month (26%) are more likely to select than Christians who attend less than once a month (11%)
- Those with evangelical beliefs are more likely to select than those without evangelical beliefs (23% v. 14%)



**“Which, if any, of the following areas of service have you heard local Christian churches or their members doing in the last 6 months? ”**

## **Feeding the hungry**

- Those age 35-49 (57%) are more likely to select than those 18-34 (49%)
- Whites (55%) and African Americans (59%) are more likely to select than Hispanics (44%) and Other Ethnicities (45%)
- Those in the Midwest (58%) are more likely to select than those in the West (48%)
- Catholics (58%) and Protestants (58%) are more likely to select than Religiously Unaffiliated (39%)
- Christians who attend a worship service 4 or more times a month (65%) are more likely to select than Christians who attend less than once a month (50%)
- Those with evangelical beliefs are more likely to select than those without evangelical beliefs (60% v. 51%)

**“Which, if any, of the following areas of service have you heard local Christian churches or their members doing in the last 6 months? ”**

### **Clothing the poor**

- Those age 35-49 (46%) are more likely to select than those 18-34 (35%)
- Those with Some College (46%) are more likely to select than those who are High School Graduates or less (37%) or with a Graduate Degree (34%)
- Catholics (47%) and Protestants (43%) are more likely to select than Religiously Unaffiliated (30%)
- Christians who attend a worship service 4 or more times a month (53%) are more likely to select than Christians who attend less than once a month (36%)
- Those with evangelical beliefs are more likely to select than those without evangelical beliefs (48% v. 38%)

**“Which, if any, of the following areas of service have you heard local Christian churches or their members doing in the last 6 months? ”**

## **Teaching English to immigrants**

- Those age 18-34 (12%) and 35-49 (11%) are more likely to select than those 65+ (5%)
- Hispanics (15%) and Other Ethnicities (16%) are more likely to select than Whites (7%)
- Those in the Northeast (13%) are more likely to select than those in the West (7%)
- Those with a Graduate Degree (19%) are more likely to select than those who are High School Graduates or less (6%) or with Some College (8%)
- Catholics (15%) are more likely to select than Protestants (9%) and Religiously Unaffiliated (6%)
- Christians who attend a worship service 1 to 3 times a month (15%) and 4 or more times a month (13%) are more likely to select than Christians who attend less than once a month (7%)

**“Which, if any, of the following areas of service have you heard local Christian churches or their members doing in the last 6 months? ”**

## **Teaching job skills**

- Those age 18-34 (13%) and 35-49 (13%) are more likely to select than those 50-64 (5%) and 65+ (4%)
- African Americans (15%) are more likely to select than Whites (7%)
- Those in the Northeast (13%) are more likely to select than those in the West (7%)
- Those with a Bachelor’s Degree (13%) or a Graduate Degree (16%) are more likely to select than those who are High School Graduates or less (6%) or with Some College (9%)
- Religiously Unaffiliated are the least likely to select (3%)
- Christians who attend a worship service 1 to 3 times a month (16%) and 4 or more times a month (15%) are more likely to select than Christians who attend less than once a month (5%)
- Those with evangelical beliefs are more likely to select than those without evangelical beliefs (14% v. 8%)

**“Which, if any, of the following areas of service have you heard local Christian churches or their members doing in the last 6 months? ”**

### **Providing tax preparation**

- Those age 35-49 are the most likely to select (9%)
- Catholics (7%) and Protestants (7%) are more likely to select than Religiously Unaffiliated (3%)
- Christians who attend a worship service 1 to 3 times a month (9%) and 4 or more times a month (9%) are more likely to select than Christians who attend less than once a month (4%)

**“Which, if any, of the following areas of service have you heard local Christian churches or their members doing in the last 6 months? ”**

### **Helping disaster victims**

- Those age 35-49 (35%) are more likely to select than those 50-64 (26%)
- Those in the South (37%) are more likely to select than those in the Northeast (26%) and West (25%)
- Protestants (38%) and Catholics (31%) are more likely to select than Religiously Unaffiliated (18%)
- Christians who attend a worship service 4 or more times a month (45%) are more likely to select than Christians who attend less than once a month (28%)
- Those with evangelical beliefs are more likely to select than those without evangelical beliefs (40% v. 28%)

**“Which, if any, of the following areas of service have you heard local Christian churches or their members doing in the last 6 months? ”**

### **Sheltering the homeless**

- Those age 35-49 are the most likely to select (36%)
- Those with a Bachelor’s Degree (33%) are more likely to select than those who are High School Graduates or less (24%)
- Religiously Unaffiliated are the least likely to select (20%)

**“Which, if any, of the following areas of service have you heard local Christian churches or their members doing in the last 6 months? ”**

### **Meeting with people in prisons**

- Those age 65+ are the least likely to select (7%)
- Those with a Bachelor’s Degree (17%) or a Graduate Degree (18%) are more likely to select than those who are High School Graduates or less (10%)
- Protestants (16%) and Other Religions (15%) are more likely to select than Religiously Unaffiliated (7%)
- Christians who attend a worship service 1 to 3 times a month (21%) and 4 or more times a month (20%) are more likely to select than Christians who attend less than once a month (7%)
- Those with evangelical beliefs are more likely to select than those without evangelical beliefs (24% v. 10%)



**“Which, if any, of the following areas of service have you heard local Christian churches or their members doing in the last 6 months? ”**

### **Providing aid for new mothers**

- Those age 18-34 (23%) and 35-49 (19%) are more likely to select than those 50-64 (11%) and 65+ (10%)
- Other Ethnicities (22%) are more likely to select than African Americans (12%)
- Those in the Midwest (19%) and South (17%) are more likely to select than those in the Northeast (11%)
- Those who are High School Graduates or less are the least likely to select (11%)
- Other Religions (22%) are more likely to select than Religiously Unaffiliated (13%)
- Christians who attend a worship service 1 to 3 times a month (21%) and 4 or more times a month (25%) are more likely to select than Christians who attend less than once a month (10%)
- Those with evangelical beliefs are more likely to select than those without evangelical beliefs (23% v. 15%)

**“Which, if any, of the following areas of service have you heard local Christian churches or their members doing in the last 6 months? ”**

### **Offering after-school programs**

- Those age 18-34 (18%) are more likely to select than those 50-64 (9%)
- Protestants (18%) are more likely to select than Religiously Unaffiliated (7%)
- Christians who attend a worship service 1 to 3 times a month (20%) and 4 or more times a month (18%) are more likely to select than Christians who attend less than once a month (11%)

**“Which, if any, of the following areas of service have you heard local Christian churches or their members doing in the last 6 months? ”**

### **None of these**

- Those age 50-64 (18%) and 65+ (19%) are more likely to select than those 35-49 (10%)
- Other Ethnicities are the most likely to select (25%)
- Those in the Northeast (21%) and West (18%) are more likely to select than those in the Midwest (11%)
- Those who are High School Graduates or less (18%) are more likely to select than those with Some college (12%)
- Religiously Unaffiliated are the most likely to select (25%)
- Christians who attend a worship service less than once a month (17%) are more likely to select than Christians who attend 1 to 3 times a month (6%) and 4 or more times a month (11%)
- Those with evangelical beliefs are less likely to select than those without evangelical beliefs (10% v. 17%)

## **“My family has received food from a church-run food pantry in the past.”**

- Those 18-34 (40%) and 35-49 (46%) are more likely to select “Yes” than those ages 50-64 (30%) and age 65+ (11%)
- Those age 65+ are the most likely to select “No” (88%)
- African Americans (43%) are more likely to select “Yes” than Whites (32%) and Other Ethnicities (26%)
- Those in the Midwest (40%) and South (35%) are more likely to select “Yes” than those in the West (26%)
- Those with Some College are the most likely to select “Yes” (42%)
- Other Religions (41%) and Religiously Unaffiliated (35%) are more likely to select “Yes” than Catholics (27%)
- Christians who attend a worship service 1 to 3 times a month (38%) and 4 or more times a month (36%) are more likely to select “Yes” than Christians who attend less than once a month (24%)
- Those with evangelical beliefs are more likely to select “Yes” than those without evangelical beliefs (44% v. 30%)

# American Views on Local Church Ministry

A SURVEY OF 1,000 AMERICANS

Lifeway **research**