

# **Pastors' Descriptions of In-person Worship Attendance 2022**

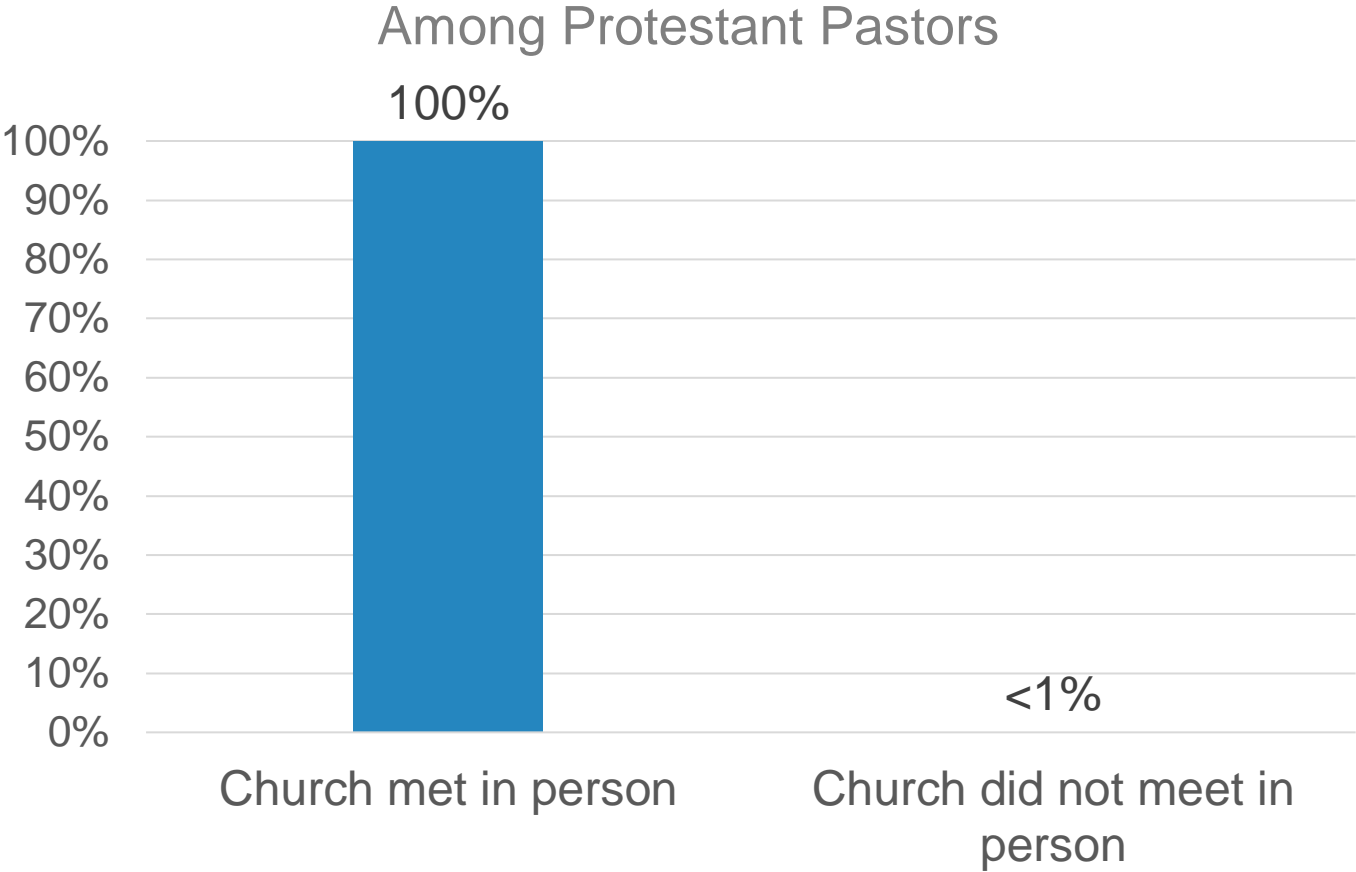
A SURVEY OF AMERICAN PROTESTANT PASTORS

**Lifeway** research

# Methodology

- The phone survey of 1,000 Protestant pastors was conducted September 6-30, 2022
- The calling list was a stratified random sample, drawn from a list of all Protestant churches. Quotas were used for church size
- Each interviews was completed by the senior or sole pastor or a minister at the church
- Responses were weighted by region and church size to more accurately reflect the population
- The completed sample is 1,000 surveys
- The sample provides 95% confidence that the sampling error does not exceed  $\pm 3.2\%$  This margin of error accounts for the effect of weighting
- Margins of error are higher in sub-groups
- Comparisons are made to the following Lifeway Research surveys: a phone survey of 1,000 Protestant pastors September 1-29, 2021, a mixed mode survey of 1,007 Protestant pastors September 2-October 1, 2020, and an online survey of 430 Protestant pastors February 1-11, 2021

# Less than 1% of pastors say their church did not meet in person in August 2022

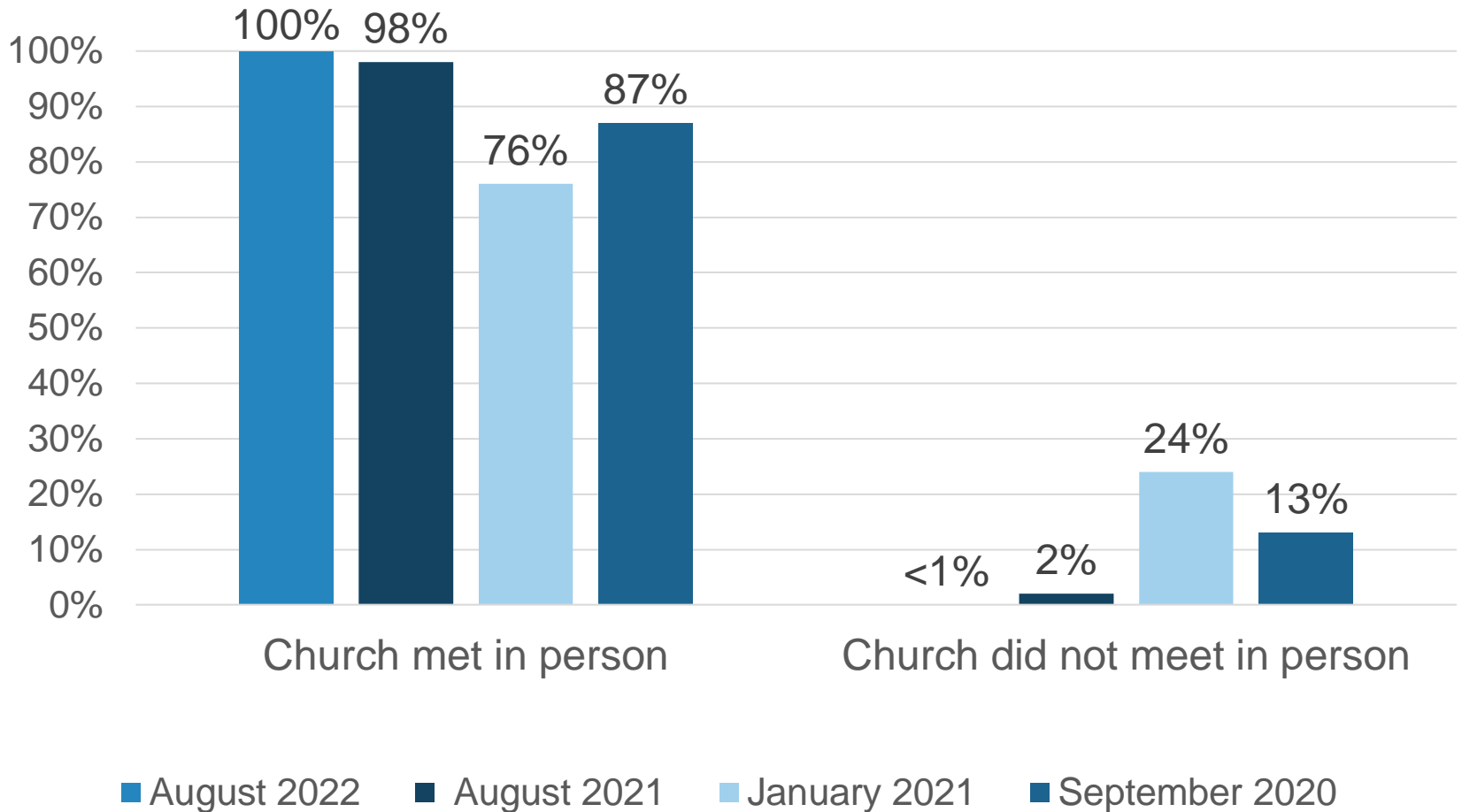


**Lifeway**research

Q: "For August 2022, what was your church's average worship attendance in-person on a typical weekend (including all ages from babies to adults but not counting anyone twice)?" n=996

# 2% more churches met in person in August 2022 than August 2021

Among Protestant Pastors

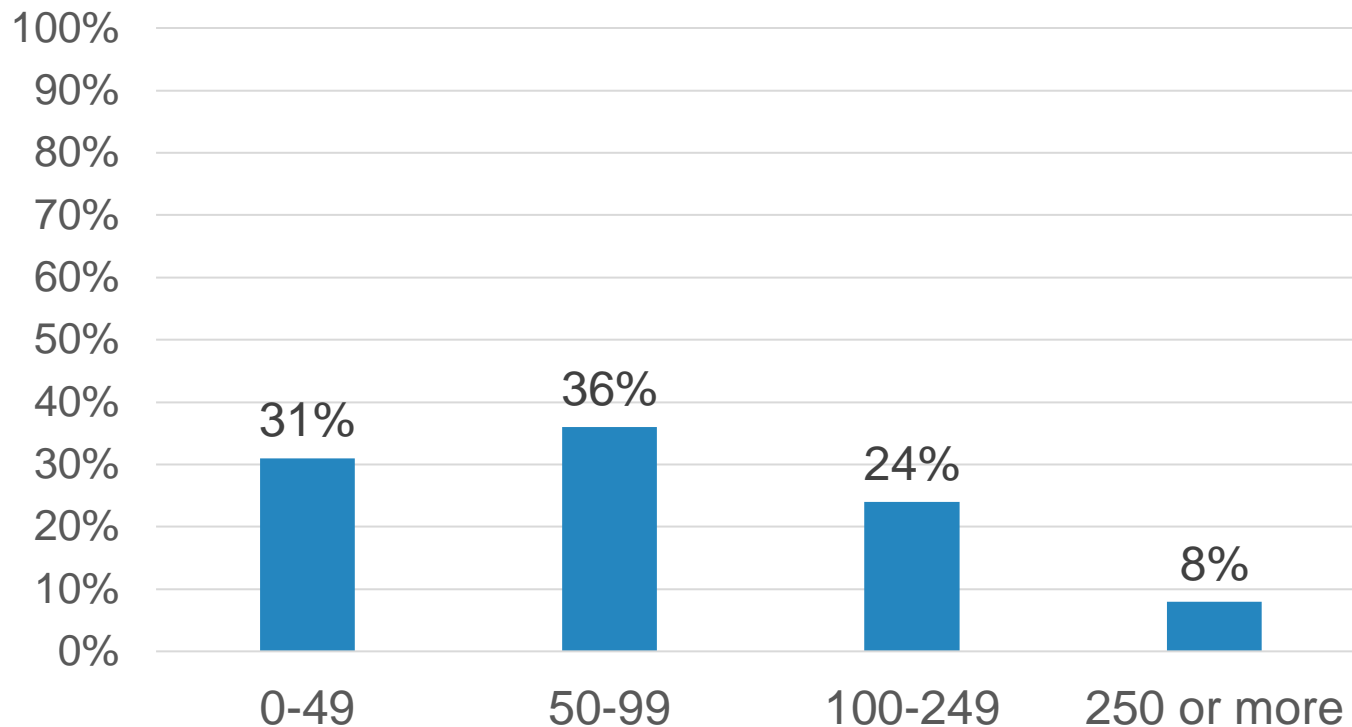


Lifeway research

Q: "For August 2022, what was your church's average worship attendance in-person on a typical weekend (including all ages from babies to adults but not counting anyone twice)?"

# August 2022 average attendance for reporting churches

Among Protestant churches that met in person in August 2022

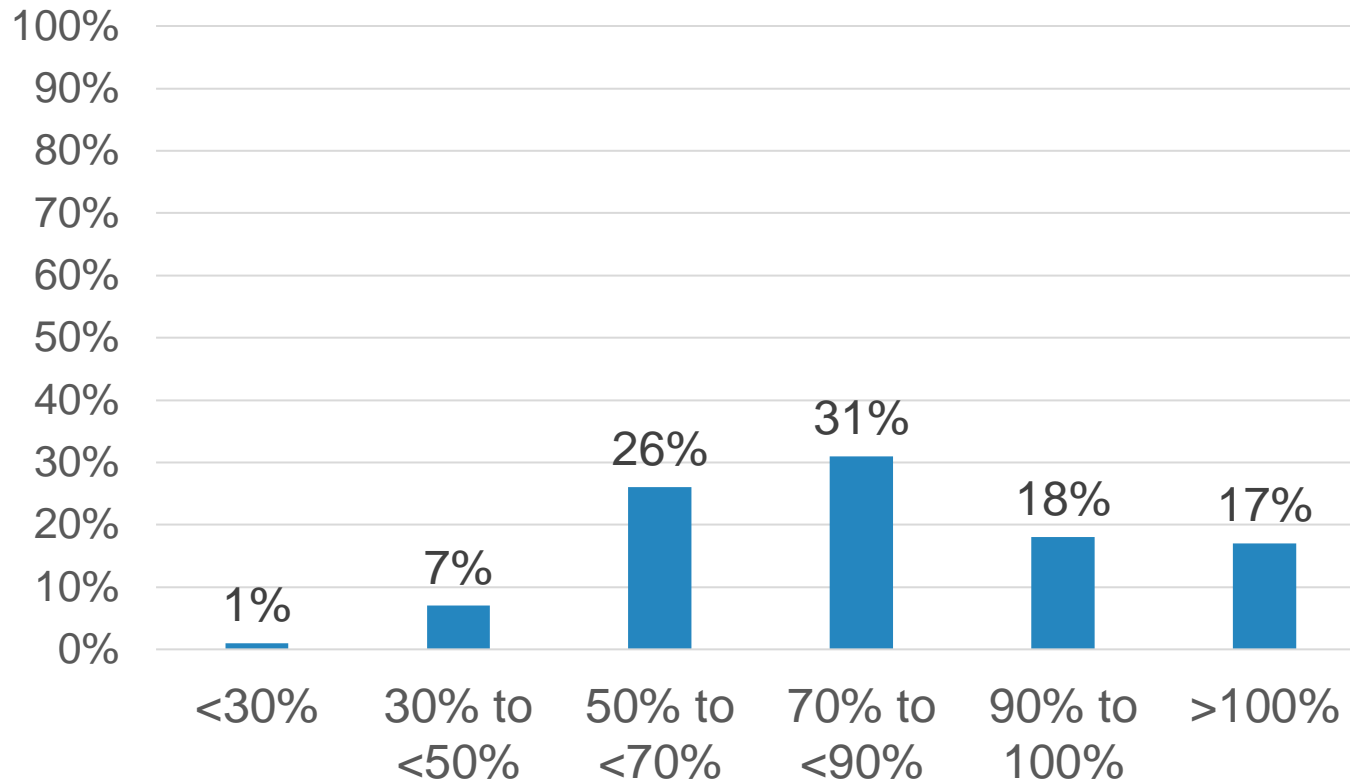


**Lifeway**research

Q: "For August 2022, what was your church's average worship attendance in-person on a typical weekend (including all ages from babies to adults but not counting anyone twice)?" *n*=992

# August 2022 attendance as a percentage of January 2020 attendance

Among Protestant Pastors

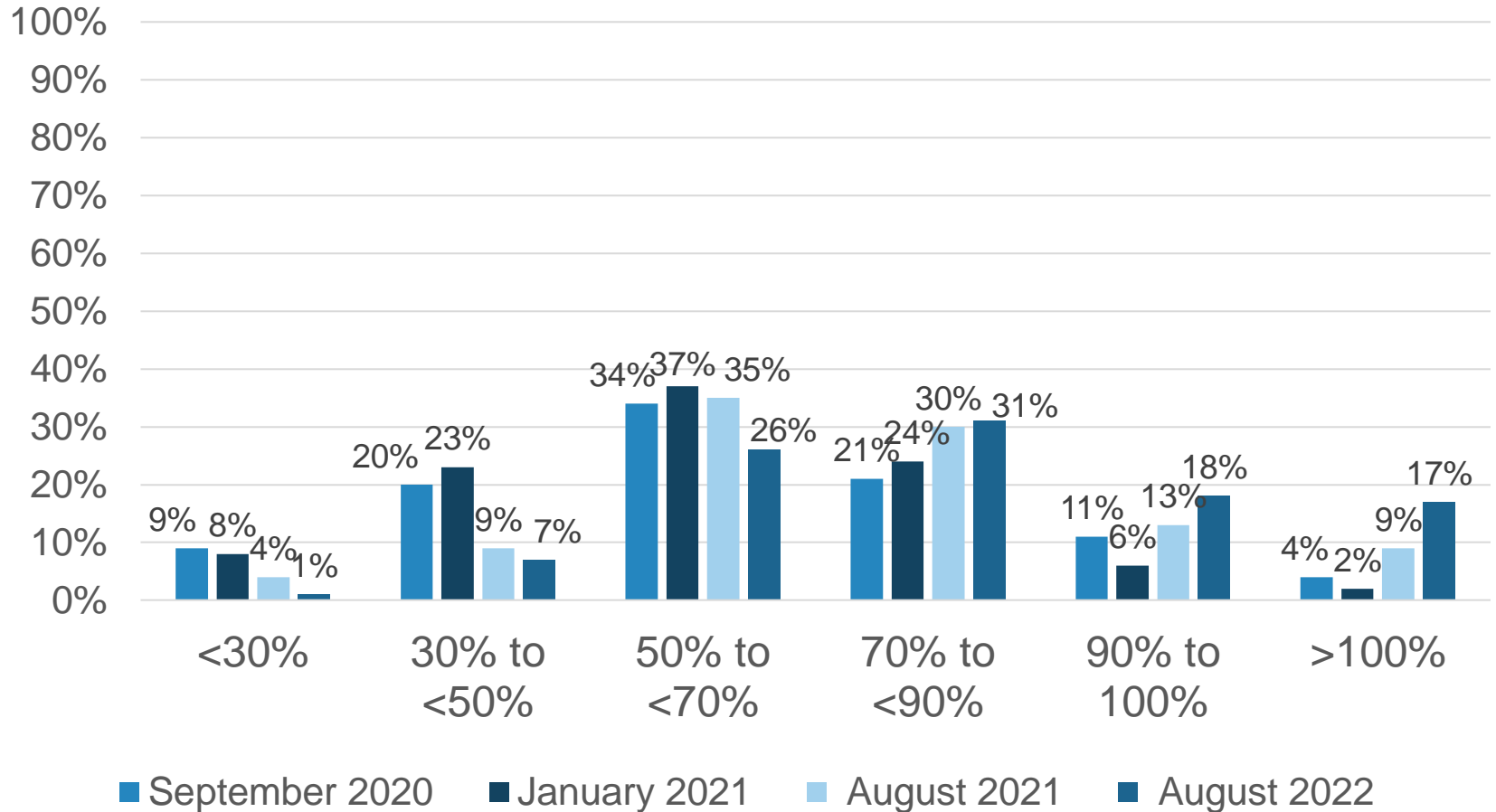


**Lifeway**research

Q: "For August 2022, what was your church's average worship attendance in-person on a typical weekend (including all ages from babies to adults but not counting anyone twice)?" *n*=924

# Attendance for August 2022, August 2021, January 2021, and September 2020 as a percentage of Jan./Feb. 2020 attendance

Among Protestant Pastors



**Lifeway**research

Q: "For August 2022, what was your church's average worship attendance in-person on a typical weekend (including all ages from babies to adults but not counting anyone twice)?"

# Mean and median of attendance as a percentage of Jan./Feb. 2020

Among Protestant Pastors

## Mean

- 63% - September 2020
- 60% - January 2021
- 73% - August 2021
- 85% - August 2022

## Median

- 62% - September 2020
- 60% - January 2021
- 71% - August 2021
- 78% - August 2022



# Significant Differences

Pastor

Ethnicity

Age

Gender

Education Level

Self-identified Evangelical/Mainline

Church

Region

Denomination

Average Attendance

**Lifeway** research

# Significant Differences

Comparisons were made to determine if there are any significant statistical differences among the pastor's ethnicity, age, gender, education, self-identified Evangelical or Mainline.

AGE	GENDER	ETHNICITY	EDUCATION	Self-Identified
18-44	Male	White	No College Degree	Evangelical
45-54	Female	African American	Bachelor's Degree	Mainline
55-64		Hispanic	Graduate Degree	
65+		Other Ethnicities	Doctoral Degree	

# Significant Statistical Differences

Comparisons were made to determine if there are any significant statistical differences among the church's region, denomination, and pre-COVID attendance.

REGION	DENOMINATION GROUP	Pre-COVID ATTENDANCE
Northeast	Baptist	0-49
South	Lutheran	50-99
Midwest	Methodist	100-249
West	Pentecostal	250+
	Presbyterian/Reformed	
	Christian/Church of Christ	
	Non-Denominational	

Note: Region is defined by the US Census locations

**“For August 2022, what was your church’s average worship attendance in-person on a typical weekend (including all ages from babies to adults but not counting anyone twice)?”**

- Pastors age 65+ are more likely to select “0-49” (47%)
- Female pastors are more likely to select “0-49” than males (37% v. 30%)
- White pastors (32%) are more likely to select “0-49” than Hispanic pastors (20%)
- Mainline pastors are more likely to select “0-49” than Evangelical pastors (38% v. 26%)
- Pastors in the Northeast are the most likely to select “0-49” (45%)
- Presbyterian/Reformed (50%) and Methodists (42%) are the more likely to select “0-49” than Baptists (22%) and Pentecostals (27%)

## August 2022 Attendance as a percentage of January 2020 Attendance

- Pastors age 65+ (16%) are more likely to report August 2022 attendance between **30 to <50%** of January 2020 than pastors age 18-44 (8%) and 45-55 (9%)
- Pastors age 18-44 (33%) and 45-55 (25%) are more likely to report August 2022 attendance **>100%** of January 2020 than pastors age 65+ (16%)
- Female pastors are more likely to report August 2022 attendance between **30 to <50%** of January 2020 than males (18% v. 9%)
- White pastors are the most likely to report August 2022 attendance between **50 to <70%** of January 2020 (30%)
- African American pastors are the most likely to report August 2022 attendance between **30 to <50%** of January 2020 (46%)
- Pastors with a Bachelor's degree (27%) are more likely to report August 2022 attendance between **70 to <90%** of January 2020 than pastors with no college degree (18%)

## August 2022 Attendance as a percentage of January 2020 Attendance *continued*

- Mainline pastors are more likely to report August 2022 attendance between **50 to <70%** of January 2020 than Evangelical pastors (32% v. 24%)
- Evangelical pastors are more likely to report August 2022 attendance **>100%** of January 2020 than Mainline pastors (29% v. 16%)
- Pastors in the Northeast (17%) are more likely to report August 2022 attendance between **30 to <50%** of January 2020 than those in the Midwest (8%)
- Pastors in the Midwest (26%) and South (25%) are more likely to report August 2022 attendance **>100%** of January 2020 than those in the Northeast (14%)

## August 2022 Attendance as a percentage of January 2020 Attendance *continued*

- Non-denominational are the most likely to report August 2022 attendance between **<30%** of January 2020 (14%)
- Methodists (20%) and Presbyterian/Reformed (24%) are more likely to report August 2022 attendance between **30 to <70%** of January 2020 than Baptists (8%), Lutherans (5%), and Pentecostals (9%)
- Methodists (41%) are more likely to report August 2022 attendance between **50 to <70%** of January 2020 than Baptists (25%), Pentecostals (26%), and Non-denominational (18%)
- Baptists (28%), Pentecostals (33%), and Non-denominational (30%) are more likely to report August 2022 attendance between **>100%** of January 2020 than Lutherans (13%), Methodists (8%), Presbyterian/Reformed (14%), and Christian/Church of Christ (10%)

## August 2022 Attendance as a percentage of January 2020 Attendance *continued*

- Pastors of churches with pre-COVID attendance of 50-99 (30%) and 100-249 (30%) are more likely to report August 2022 attendance between **50 to <70%** of January 2020 than those with attendance of 0-49 (18%) and 250+ (19%)
- Pastors of churches with pre-COVID attendance of 0-49 (27%) are more likely to report August 2022 attendance between **90 to 100%** than those with attendance of 50-99 (18%) and 100-249 (11%)



# **Pastors' Descriptions of In-person Worship Attendance 2022**

A SURVEY OF AMERICAN PROTESTANT PASTORS

**Lifeway** research